

# Natura 2000 and Kilpilahti road project

VIA NORDICA 2008

10th June

Tarja Söderman

Finnish Environment Institute, SYKE

Research Programme  
for Environmental Policy

# Natura 2000 Assessment practices in Finnish road projects

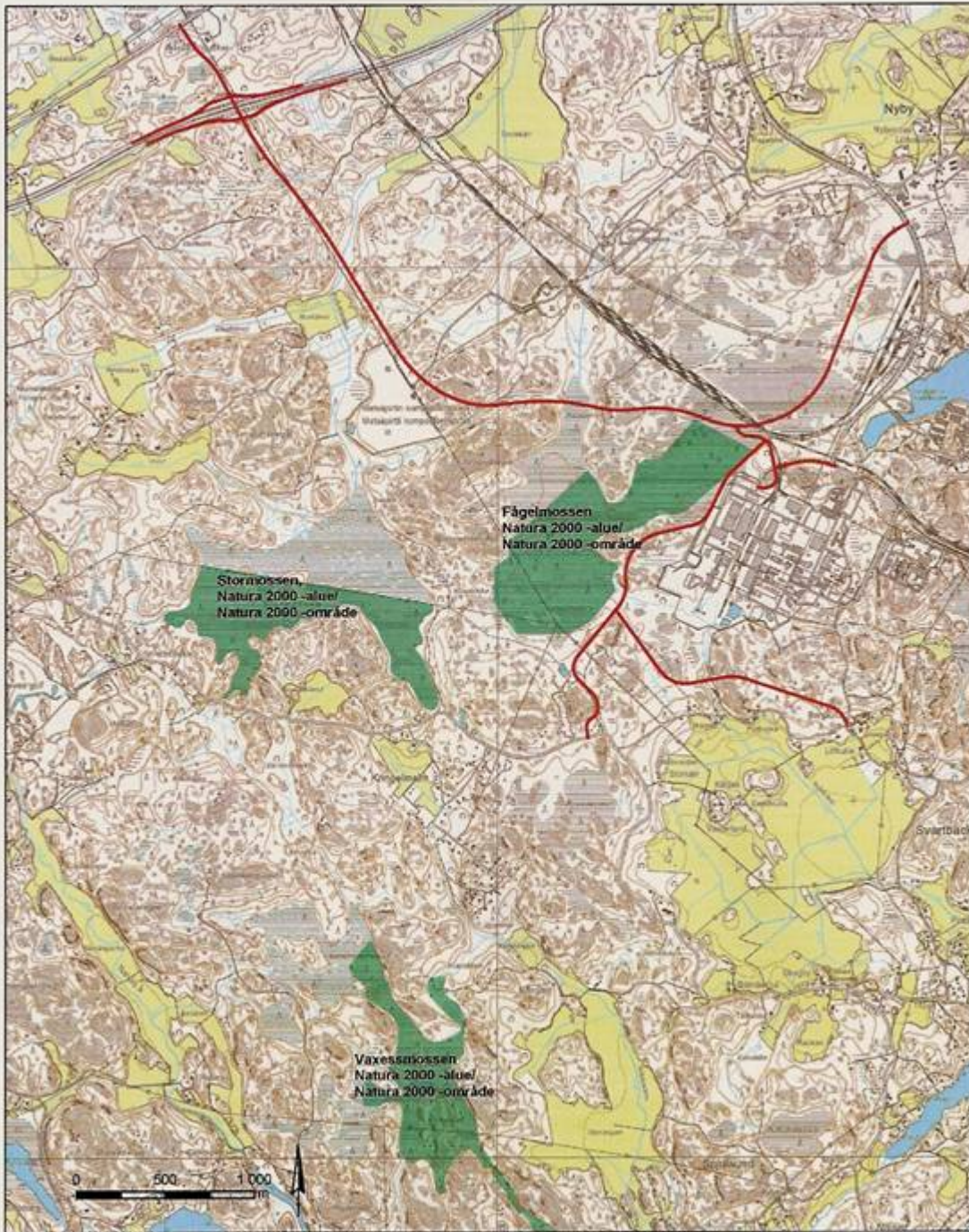
- Guidelines in 2003, Nature Conservation Act
- Screening for N2000 Assessment is carried out by the project proponent with the help of the regional environment centre – reported
- Scoping is carried out by the project proponent, ecology consultant or both
- Assessment is carried out by the ecology consultant and reported separately
- Official opinion of the regional environment centre is required
- The authority grants or rejects the permit

# Road planning phases and Natura 2000 Assessment

- Transport system planning – screening for N2000 Assessment is not usually done in this strategic planning phase
- General planning – screening, scoping and implementation of N2000 Assessment, examination of alternatives
- Road and construction planning – no alternatives, no N2000 Assessment possible any more

# Kilpilahti road project and need for N2000 Assessment

- Construction of a new road to Kilpilahti industrial area
- General planning phase in 2005: Question on the need of N2000 assessment, negotiated between the road administration and the Uusimaa regional environment centre
- Screening result: Assessment necessary because the Natura 2000 site is in the affected area and the planned road follows the eastern edge of the active raised bog area (FI0100068)



**New Kilpilahti  
road in relation  
to the Natura  
2000 site Boxin  
suot  
(Fågelmossen,  
Stormossen and  
Vaxessmossen)**

# Fågelmossen and Kilpilahti industrial area



# Scoping the Assessment

- The content of the coming assessment was negotiated between the road administration and the Uusimaa regional environment centre
- Existing butterfly and plant survey and report, published already in 1999
- Need for new surveys: flying squirrel, updated butterfly, plant and habitat type data, inventory of new alternatives

# Baseline studies

- Carried out by the ecology consultant - field inventories in March – August 2005, a 100 – 200 m wide corridor was examined
- Baseline surveys were reported as an annex of the general plan report (23 pages)
- N2000 Assessment report was reported as an annex of the general plan report (15 pages)



# Results of the Assessment

- The adverse effects on the N2000 site were not significant
- The affected habitat type (active raised bogs) reduced 0,2 ha (0,2 %)
- The reduced part was not very representative
- The affected part (Fågelmossen) did not host any suitable habitats for the Scarce Fritillary (*Euphydryas maturna*)
- The road will be constructed as a mitigation measure on on a pile plate to not disturb the water balance of the bog

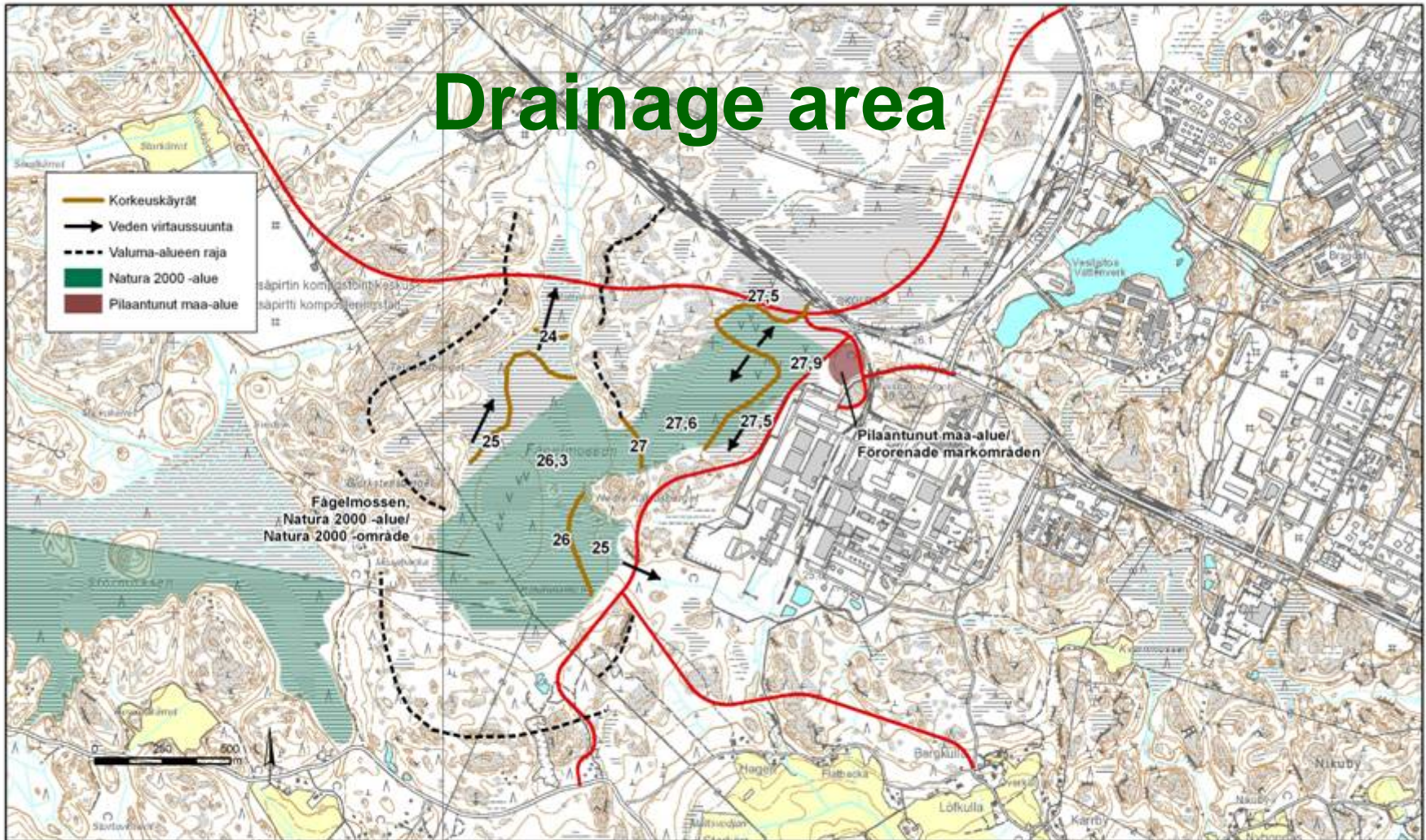
# Official opinion of the Uusimaa regional environment centre

- The main conservation objectives were not affected significantly (22 February 2007)
- Conditions on realization of the project concerning effluent waters, water regime, land masses, buffer zone

# Road planning phase

- Jan – Oct 2008, construction 2009->
- Conditions set by the official opinion will be followed, detailed realization
- The ecological surveys will be updated and specified
- Property boundaries different than N2000 boundaries
- Area of the peatland protection programme larger than N2000 site
- Decommissioning of the landfill site next to N2000 site, coordination with road planning
- Regular meetings with road planners and environmental authorities

# Drainage area



Countour lines: brown

Direction of water flow: arrows

Border of drainage area: black

Natura 2000 site: green

Contaminated land area: red brown

Planned roads: red



TIEHALLINTO

KILPILAHDEN UUSI TIEYHTEYS/  
NY VÄGFÖRBINDELSE TILL SKÖLDVIK  
Yleissuunnitelma/generalplan

Uudenmaan tiepiiri  
Nyländs vägdistrikt

# Conclusions

- Natura 2000 assessment/ screening report obligatory for road projects if located near Natura 2000 sites
- Assessment reported individually or as part of EIA
- Close co-operation between road administration and environmental authorities in general planning and road planning (mitigation) phases
- Assessment must be detailed (appropriate)
- Official opinions of regional environmental centres guide quite strictly planning and assessment